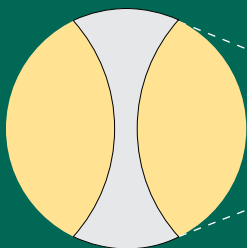


# *Twin Sample™* *Biopsy Needle*

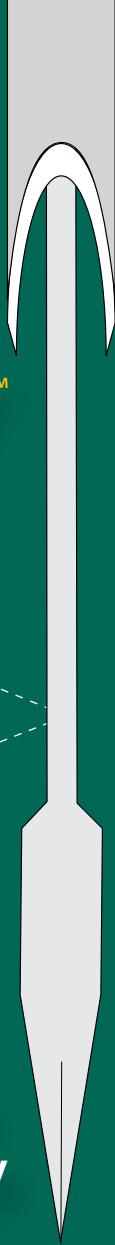


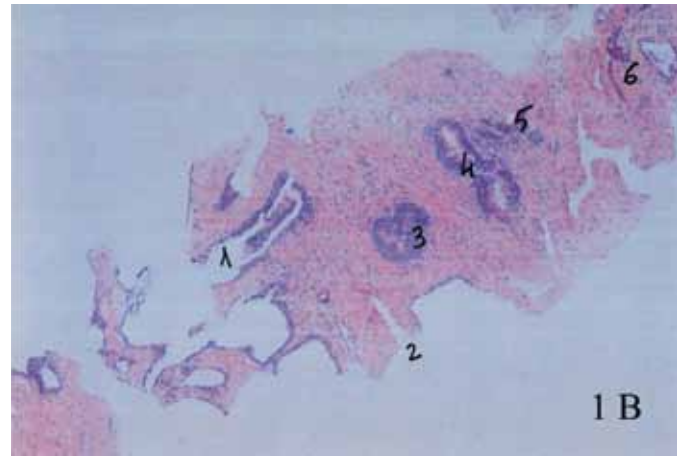
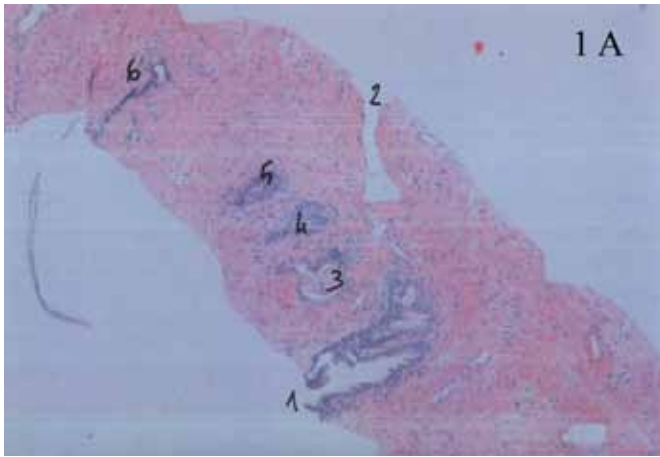
*Sample chambers cross section*

**Two samples** from one  
pass, one for pathology  
and one for your lab.

Epitome Pharmaceuticals  
Call toll-free (855) 373-8663  
Abroad +1(902) 492-1814

[www.twinsample.com](http://www.twinsample.com)





*Slides from twin samples of fresh ex-vivo prostate.*

***The Twin Sample biopsy needle was created to address the need for fresh tissue for molecular assays.***

One sample satisfies pathology and ethical requirements for patient treatment, leaving the second available for molecular assays. Since the second mirrors the first, the pathologist's findings illuminate areas of interest, as illustrated above.

***Operates like a conventional biopsy needle – no training needed.***

- Available in typical lengths and gauges
- Two gauges larger than conventional needle: 16G Twin Sample yields two samples equivalent to 18G conventional needle
- ASCUT disposable automatic actuator or prepared for Bard or other gun
- Echogenic centimeter markings and tip
- Smooth, symmetrical tip guides easily

### ***Sample Custody***

Your own sample is sent from the biopsy procedure directly to your lab. No more tracking a single biopsy or finding the remaining block inadequate. Make getting tissue from every biopsy, on every patient, routine.

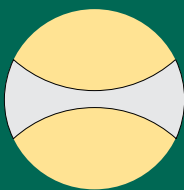
### ***High quality tissue***

Fresh tissue stays intact in modern transport media. A median size of 5 mg per sample provides enough mRNA for a complete gene expression assay.

### ***Quality assurance and worldwide delivery by Gallini Medical Devices.***

Twin Sample needles are manufactured to the highest standards by Kaneko MediX in Japan for Epitome Pharmaceuticals. Actuators, packaging, sterilization, and regulatory aspects are provided by Gallini Medical Devices.

***Paired samples with minimal intrusion***



# ***Twin Sample™ Biopsy Needle***

*Sales & Service*

**Epitome Pharmaceuticals**  
California, USA

[www.twinsample.com](http://www.twinsample.com)

Toll-free in North America

**(855) 373-8663**

Abroad +1(902) 492-1814

*Contact us for quotation.*

- Available as 20 cm, 16 gauge with disposable actuator
- Other sizes available with minimum order of 100 units
- Complete kits, with biopsy needles, transport jars and pre-addressed shipping containers, can be shipped to multiple sites

Fulfillment, delivery and invoicing by  
**Gallini Srl, Italy**

FDA 510(k) and CE Mark, December 2013

Patent issued in Japan

Patent pending in USA and European Union